



Exporting Images to PowerPoint from SHOWCASE®

This guide provides instructions for exporting medical images from ShowCase to slides in a PowerPoint presentation. You can export images directly to PowerPoint slides in commonly used formats (AVI, TIFF and JPEG).

Process images in ShowCase as needed for your presentation


You may need to remove patient names, margin clips, or crop your images using ShowCase tools. You can make the changes to your images in ShowCase before you export them. Instructions on how to do this in the *Rearranging, Annotating, and Working with Images* user guide.

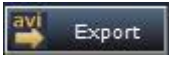
Create a folder for the presentation and image files

One image file will be created to store each image exported for display in PowerPoint. PowerPoint does not import the image files so the image files must be managed along with the PowerPoint file containing the presentation. We recommend creating a new folder to store your presentation and the all the associated image files used in the presentation. This simplifies managing the files and copying them to another computer, if necessary.

Select and export images

From the ShowCase study display window, opened by double clicking on a patient name in the ShowCase *Study Lists* window, you can click on one or more images to select them (hold down the Ctrl key to select multiple

images). Then click the AVI button  on the toolbar.

If you are in a ShowCase Edit window, opened by double-clicking on an image in the study display window, you can click the *Export* button  on the annotations tab to export the current image to PowerPoint.

In either case, a window will appear for you to select the several settings for the exported images.

Start by selecting the format for the exported images. TIFF (.tif) and JPEG (.jpg) can be used for single frame images. TIFF will often result better image quality with larger file sizes. JPEG may result in some degradation of image quality, but the file sizes are often much smaller. Bitmap (.bmp) is not recommended for use with PowerPoint. AVI is used for clips (multi-frame images).

Next, select a location (folder) and enter a file name for ShowCase to store the image into a file for use by PowerPoint. Check the *PowerPoint slides* option near the bottom of the window if you want a PowerPoint slide to be created to display the image.

Then click the Export button in the dialog.


- If you do not have a PowerPoint presentation open, ShowCase will open a new presentation and create slides for each image exported.
- As needed, add titles to your slides and move or resize the image as you would any slide object. **(Note that resizing can introduce artifacts. Avoid resizing when possible.)**

Video Export

- AVI Compressor type – Microsoft Video 1 is usually the best option. If your presentation does not play on a computer other than the one where it was created, you will need to download the Microsoft Video 1 codec (compressor/decompressor) or switch to a different AVI compressor when exporting the videos from ShowCase.
- Quality setting – you will want to experiment with this setting to find a good combination of image quality and file size. Higher Quality settings provide better image quality and larger file sizes. Lower Quality settings result in reduced image quality and smaller file sizes.

Exporting Stress Echo Clips

In your stress echo study, choose the *Stress by View* or *Stress by Stage* option in the Image Display button in the upper right corner of ShowCase. Now, *without selecting any of the individual images displayed*, click the **ppt**

button  in the upper left of the ShowCase tool strip. This will export all 4 moving images as one video embedded in PowerPoint.

If you want to export an individual stress image to PowerPoint, select the image and click the **ppt** button.

PowerPoint instructions

Saving the exported images

Any image files that you have exported from ShowCase into a PowerPoint presentation must be saved along with the presentation for the images to be seen in the live presentation.

Save your presentation

Save your presentation to the same folder where the image files were saved. In order to run the presentation, you need to have the image files and the presentation.

Once your presentation is complete, you can easily copy the folder containing the presentation and exported images to a USB drive if needed.

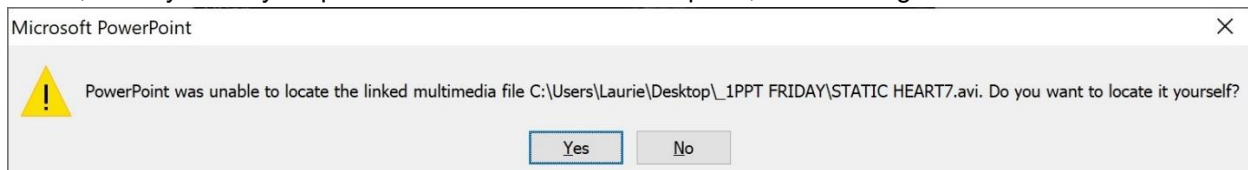
Playing your presentation

During your presentation, click on a clip to play it.

Always test your presentation on the computer where it will be played. There are several issues that can prevent the images from displaying properly.

Pitfalls

- After you select the export location and file name, be sure to complete the image export by clicking the Export button on the dialog.
- If you did not save your images and copy them along with the PowerPoint presentation file as described above, when you run your presentation on a different computer, the following PowerPoint error will be seen.



Troubleshooting

PowerPoint Opens but Hangs

Recent releases of PowerPoint have had the new Microsoft “CoPilot” features forced on them, and this often causes PowerPoint to freeze when ShowCase first starts it up.

If you’re encountering this, your best bet is to open PowerPoint yourself, click through all of the “hey, look at these new features” stuff that pops up, create a quick and simple presentation, save it, and exit PowerPoint.

This often frees up PowerPoint to function as it should.

SHOWCASE® is a registered trademark of Trillium Technology, Inc.